



# 6G-SDI Interface board

**Real time 4K. Flexible.  
Powerful.**

The Twiga **6G-SDI** interface board converts video signals from 4K zoom block cameras to 6G-SDI output delivering **uncompressed 4K video**.

Ideal for **multi-camera setups** in broadcast, industrial or medical environments, it supports **external synchronization** with the Sony FCB-ER8550 camera.

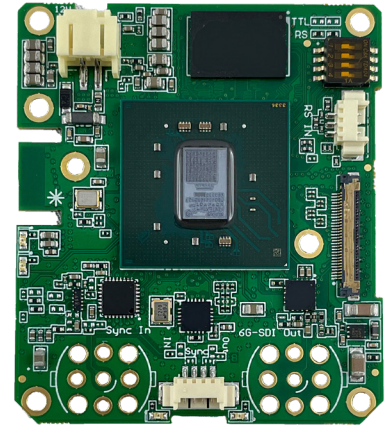
An embedded **powerful** Kintex-7 FPGA enables **real time scaling** and **custom image processing** algorithms.

Compatible with Sony's 4K zoom block camera range, including the latest FCB-ER9500 model.

# 6G-SDI

## KEY FEATURES

- 6G-SDI output
- Video resolution up to 2160p30
- Automatic 4K camera video format detection
- Communication: UART RS232 or TTL
- Camera output video format configuration by DIP switches
- External synchronization input (for Sony FCB-ER8550)



FUNCTIONS	SPECIFICATIONS
Digital video output	6G-SDI SMPTE-ST2081
Digital video output connector	BNC (default) or MCX
External synchronization connector	Molex and coaxial BNC or MCX connector (optional, not mounted by default)
Camera control	VISCA commands via UART RS232 (default) or TTL
Power supply	6 to 12 VDC
Operating temperature range	0° to 60°C
Storage temperature range	-20°C to 60°C
Regulation	CE EMC compliant, PCB: UL 94 V0
Dimensions (mm)	57,5(H) x 50(W) x 18(D)
Weight	23g

## Ordering information

PART NUMBER (P/N)	DESCRIPTION
TV10 0080	6G-SDI interface board
TV50 0023	<b>Mounting kit</b> - Includes: 30-way USL20-30SS-012-C cable assembly, 2-way cable for power supply, 3-way cable for RS232/UART TTL, 4-way cable for external sync, right-angle black anodized aluminum bracket, mounting screws & spacers
TV50 0008	<b>Cable kit</b> - Includes: 30-way USL20-30SS-012-C cable assembly, 2-way cable for power supply, 3-way cable for RS232/UART TTL

## Need a custom version ?

We support **tailored solutions** based on your system's layout, connector positions, or special commands. Let's talk about your integration!

## About i2S | Twiga

For over 45 years, i2S has been a leading expert in high-quality image capture and processing. In 2023, i2S expanded its expertise by acquiring Twiga, a global specialist in video acquisition, transmission and processing.

Today, i2S partners with customers on complex imaging projects, applying its knowledge across various fields, including industry, heritage digitization, underwater imaging, and health & wellness.